

Looking Ahead

February	1		NO CHOIR REHEARSAL
	2	5 p.m.	Band rehearsal
	5		Super Food Sunday
	6	7 p.m.	Nurture Commission
	7	6 p.m.	Worship Teams
		7 p.m.	Witness Commission
	8	6 p.m.	Simple Supper & Story - Pastor Melissa
		7 p.m.	Choir
	9	5 p.m.	Band rehearsal
		7 p.m.	Building the Bridge Committee
	13	7:30 p.m.	Stewards Commission
	15-18		Interfaith Hospitality Network (IHN)
	20	7 p.m.	Board
	22	6 p.m.	Simple Supper and Story-Phil Wright
	23	5 p.m.	Band
	24	6:30 p.m.	Building the Bridge movie
	27	6 p.m.	Education Commission

Ladies Birthday Luncheon

February 8

On Wednesday February 8, the **Ladies' Birthday Lunch** will be at 12:30 p.m. at Angel's Cafe, next to Bandido's in the Georgetown Shopping Center (intersection of East State Boulevard and Maplecrest Road). Please tell Lois Guess by Monday, February 6 if you plan to attend.



Stephen Ministry at Beacon Heights

A ministry of care-giving, person to person. When your life is filled with sorrow, stress, transition or struggle, there is someone who cares. Contact a Stephen Leader (Connie McGowin, John Wagoner, Sue Warren) with your interest or questions.



SUNDAY MORNING SCHEDULE

Adult and Children's Sunday School at 10:00 a.m.

Next Week—February 5, 2012

9:00 and 11:15 a.m. Worship

"Being an un-weary runner"

We are often an impatient people. We like to see instant results. We like our meals prepared rapidly. We want our mail delivered promptly. We want our problems solved immediately. In a brief study of our culture, it is not surprising that most of the advances in technique and technology in America's history have focused on efficiency, whether we are talking about the cotton gin or the iPhone. As such, we may bristle against the old sayings of the church like "God works in mysterious ways" and "God's timing is not our timing."

So, how does our impatient culture cope with and try to understand a lesson like the one offered by Isaiah to a people in harsh exile for multiple generations? What can we learn from a people who must have questioned the nature or existence of God in such circumstances? How do we internalize and incorporate the faithful admonition from Isaiah that those who 'wait for God shall renew their strength...shall run and not be weary?'

Join your church family for worship as we reflect upon these themes on waiting through scripture, song, a choral reading in the 9:00 service and a drama at the 11:15 service.

You are invited to read Isaiah 40:21-31 in preparation for this worship experience.

Pastor Brian

THIS WEEK AT BEACON HEIGHTS

Monday - Office Closed

Wednesday

No Choir Rehearsal this week

Thursday

12:30 p.m. Spirit Journey Women
5 p.m. Band practice

Next Sunday

Super Food Sunday

Food Bank Servers 2/1/2012

Mary Whitehead
Bill Kilgore
Joan Thompson

Food Bank Activity 01/25/2012

28 clients/families served.
88 people cumulative (in families)

STATISTICS

January 22, 2012

9 a.m. Worship	79
10:00 a.m. Building the Bridge	94
11:15 a.m. Worship	71

Adult Offering 1/15/11	\$4,799.00
Weekly Budget	\$7,311.00

Beacon Heights Church believes everyone is a child of God. We welcome all people, of any age, gender identity, race, ethnicity, sexual orientation, family status, socio-economic status, physical ability, mental ability, or place along their faith journey.

THE BEACON

PUBLISHED BY

Beacon Heights Church of the Brethren
2810 Beacon Street
Fort Wayne, IN 46805
phone 260-482-8595
E-mail: office@beaconheights.net
Web site: www.beaconheights.net

EDITOR

Anne Ott
E-mail: office@beaconheights.net

CHURCH STAFF

Melissa Bennett,
Pastor for Youth
E-mail: spiritpeace@hotmail.com
Office Hours: Tues 9:30 -12:30,
Fri. 9:30-10:30

Brian Flory
Pastor for Worship
E-mail: pastorbrian@beaconheights.net
Office Hours: Tu-Fri. 9:00 -1:00

John and Janice Kulp Long,
Pastors for Congregational Life
E-mail: longsgone@hotmail.com
Office Hours: Mon-Thurs, 9:00-12:30

Anne Ott, Office Manager
Tues-Thurs-9:00-3:00, Fri. 9-12:00
Church office closed Mondays.

If you have questions regarding Beacon information, please contact the church office between 9:00 a.m. and 3:00 p.m. Tuesday-Friday.



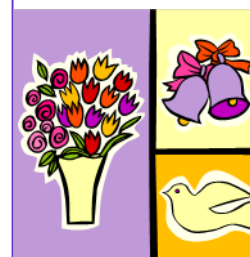
Looking for a good use for ...
Komets tickets or coupons?
Or cookie decorating supplies?



The youth are looking for the following items for events coming up:

1. Komets tickets or coupons, needed before Feb. 5.
2. Cookie decorating supplies, to borrow or to keep, needed by Feb. 12. If you would like to loan us something, please make sure it is clearly marked with your name.

Thank you for your help!



'Meet and Greet' for Brian Myers and Ginger Thompson

Reconnect with (or meet for the first time) Brian Myers (son of Steve and Linda Myers) and his fiancée, Ginger Thompson, after 11:15 worship on Sunday, February 12. Light refreshments will be served. Brian and Ginger will marry March 17. Come wish them happiness and blessings!

Please don't feel you have to bring a gift, but should you wish to do so, they are registered at Target and Bed Bath and Beyond.

Progressive Brethren Updates

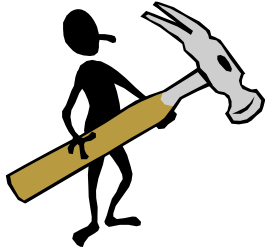
As we move into the first weeks of 2012, the pastoral team and the Board wish to offer an update on conversations and happenings emerging from the 2011 Annual Conference.

Over the next few weeks, this space will feature highlights of the ongoing work of the pastoral team and the Board that may be of interest to you. Please note: letters which you may find of interest are posted for your review on the reverse side of the name tag board. Other activities and initiatives being undertaken by the pastoral team are also posted on the back of the name tag board.

In addition, you are invited to continue to pray for the journey of all people and congregations related to last summer's conference events.



The Pastoral Team and Board have sent letters of affirmation, appreciation, solidarity, and support to three Indiana congregations and On Earth Peace this past week. Goshen City, Richmond, and Wabash congregations have adopted statements of inclusion since Annual Conference 2011. On Earth Peace, an agency of the Church of the Brethren, adopted a statement of inclusion in September at its Board meeting.



**February 26-March 3, 2012
Disaster Service Team
Heads to Alabama!**

Beacon Heights Church has been assigned to go to Arab, AL, for our disaster service trip this coming year (2012). The need is great. It will be a special time for volunteers from Beacon Heights because the long-term director for that project is our own Steve Keim! He already anticipates working with us!

Please contact Pastor John if you are interested in participating so he can add your name to the list.

Recycle Your Greeting Cards!

If you'd like to recycle the fronts of greeting cards, please tear them off and put them in Phyllis Hall's mailbox. They will be used to create cards for next year's Hanging of the Greens and other uses. Keep your eyes open for a 'card crafting' day here at Beacon Heights to fashion new cards from the old.

**Simple Supper and Story
Supper at 6 p.m.; Story at 6:30 p.m.**

Stories and dates are:

Feb. 8 - Pastor Melissa Bennett "Issues Surrounding Immigration"

Feb. 22 - Phil Wright "Bringing High-speed Rail to NE Indiana"

Children's Chapel sign-up

Have fun spending time reading a book and playing with our little ones (age 2 1/2 - Grade 1) by signing up for a Children's Chapel time. There are lots of resources in the church library downstairs for creative inspiration. The kids will love getting to know you and you them! It's a more relaxed way with less planning time to minister with our kids. **Sign up sheets are on the table to left of the north drinking fountain.**

**Joy and Suffering in the Body
Presidential Forum at
Bethany Theological Seminary
April 13-14, 2012
Registration has opened.**

Bethany's fourth Presidential Forum will center on a discussion of the intersection of sexuality and spirituality. The title refers to both the joy and suffering in individual bodies as well as in our communal faith bodies.

For more information or to register, go to
http://www.bethanyseminary.edu/news/forum2012_1

**SAVE THE DATE !!
2012 Connecting Families Retreat
April 20-22, 2012
"You Will Know Them By Their Fruits --
Not Their Orientation"
[http://www.progressivebrethren.org/Other/Other/
connectingfamilies.html](http://www.progressivebrethren.org/Other/Other/connectingfamilies.html)**



IHN Schedule—Sign Up Now

Beacon Heights continues to assist Interfaith Hospitality Network in meeting the needs of homeless families in our community. We will be the host congregation, providing dinners, supplies, and children’s activities, on February 15 through February 18. Please be a part of this important service opportunity by signing up on the poster in the fellowship hall. Contact Mark and Barb Beck with questions.

Sympathy

We extend sympathy to Thomas and Krista Hamer Schweer following the death of Thomas’ mother, Johanna, last weekend.

Adopt-a-Food - A new way to shop for the Food Bank!



The weekly shopping list for our food bank shopper is lengthy. Consider signing up for [a MONTHLY donation of ONE FOOD from the list on this week’s bulletin insert.](#) Please check the item you’d like to purchase and return the completed insert to the basket on the ledge outside the church office.

Of course, if you prefer to continue to make donations based on other considerations such as grocery store sales, your attendance plans, financial planning, and food already on hand, that is also fine. Your ongoing monthly contributions of food will reduce the amount of work for our shopper.

Forms are located on the ledge outside the church office.

Resolutions for a better world from New Community Project

Looking ahead into 2012, it’s hard to be that optimistic. Here and abroad many people are struggling, as is God’s creation. And sometimes we don’t know what we can do to make a difference. Fear not! Here are ten things any of us can do that in the course of a year will have a BIG impact—one ourselves and on our world. Try ‘em on, see which one(s) fits you, and let’s make the New Year better than the Old Year!

Resolve to leave the car at home one day a week (takes planning, and maybe some walking, biking and ride-sharing, but the payoff is huge: 1000 pounds of CO2 in a year! And since you’ll inevitably need to explain your choice to others, this will educate and maybe inspire them too!).

(New items from New Community’s list will appear in the Beacon periodically.)

YOUTH

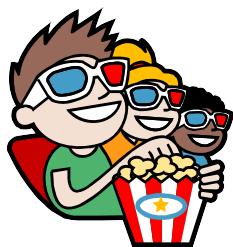
High School

NEWS

Middle School

Looking ahead.....

Komet Hockey
Friday, February 17
Please RSVP by
February 5th.



Sunday, March 4th,
movie after church
(with lunch and
chocolate following!)

Saturday, April 14th
picnic/dinner for
youth and families.



For MS Youth and their Mentors!!!

Beloved, let us love one another!

**Potluck, cookie
decorating, and
games about love...**



Sunday, February 19
following worship until
3:00 p.m. at the church

Please bring a dish to share.



RSVP to
Pastor Melissa
by February 12.