

# THE BEACON NEWSLETTER

Volume 51, No.23

June 7, 2009

## SUNDAY MORNING SCHEDULE Adult and Children's Sunday School at 9:00 a.m.

<b><u>LOOKING AHEAD</u></b>			
June	23	6:30 a.m.	Early Breakfast Group
	26-30		Annual Conference in San Diego, CA
	28	4-7:30 p.m.	HS Youth Picture Party
	29	7:00 p.m.	Prayer Shawl Ministry
July	1	8:00 p.m.	Stewards Commission
	7	6:30 a.m.	Early Breakfast Group
	8	12:30 p.m.	Ladies Birthday Luncheon

**Equal Exchange Coffee Anyone?** Wouldn't you like to be confident that farmers growing your coffee beans are paid a fair price for their work? Or that they have access to affordable credit which facilitates business planning and family stability? Or that the coffee was being grown in a way that minimized chemical dependency and maximized biodiversity. The really great news is that soon you will be able to order coffee beans (whole or ground) here at Beacon Heights as part of the Equal Exchange Interfaith Program. Paul Spoelhof will set up a table in the fellowship hall on June 7<sup>th</sup> to provide more information and start taking orders

Equal Exchange ensures that coffee farmers receive a fair piece of the coffee profit pie. (mmm... coffee pie) The fair trade model deployed by Equal Exchange is based on buying from farmer cooperatives which encourages confident relationships and delivers the best price to the farmer. Since November, 2008, we have served Equal Exchange coffee during the fellowship hour on Sundays and soon we will sell Equal Exchange coffee so that you can brew it at home all week long. Good coffee, sound sleep, sounds good.

\*\*\*\*\*  
 \* **Notice of Called Council Meeting on June 21** \*  
 \* There will be a called council meeting June 21st in the church \*  
 \* sanctuary immediately following 10 a.m. worship to consider \*  
 \* the licensing of Rebecca Harding. \*  
 \*\*\*\*\*

If you have questions regarding Beacon information, please contact the church office between 9:00 a.m. and 2:00 p.m.

### Next Week

10:00 a.m. Worship

### "Receiving the Day"

Time, for all of us, is a given limited fact. We receive it in carefully measured increments. These flow directly from our future and slip quietly into our past. In each day we count a certain number of hours. Each week ticks off a certain number of days. And ultimately we experience a life-span the length of which is at present unknown.

All too often we feel trapped by time with our full date-books and busy, demanding schedules. Too often these seem to rule our lives. We never have enough time to complete a day's work. We frequently worry about our mistakes of the past and wonder how we'll deal with the obligations and expectations that lie ahead. We feel chained to an unwanted daily routine.

Is time a curse? Or is there a way we can view it differently? In the midst of our busy lives, how can we view this limited thing we know as time as a gift of grace from the God who loves us dearly?

Please read Matthew 6:25-27, 34 in preparation for next Sunday's worship.

Pastor John

# THIS WEEK AT BEACON HEIGHTS

## TODAY

Middle School Heritage Tour Begins

## Monday

7:00 p.m. Executive Committee

## Tuesday

6:30 p.m. Growth and Outreach

## Next Sunday

SCRIP Orders Due

## Food Bank

Mary Whitehead  
MaryJane and Tom Coursen

Beacon Heights Church believes everyone is a child of God. We welcome all people, of any age, gender identity, race, ethnicity, sexual orientation, family status, socio-economic status, physical ability, mental ability, or place along their faith journey.

## THE BEACON

### PUBLISHED BY

Beacon Heights Church of the Brethren  
2810 Beacon Street  
Fort Wayne, IN 46805  
phone 260-482-8595  
E-mail: office@beaconheights.net  
Web site: www.beaconheights.net

### EDITOR

Anne Ott  
E-mail: office@beaconheights.net

### CHURCH STAFF

Melissa Bennett,  
Pastor for Youth  
E-mail: spiritpeace@hotmail.com  
Office Hours: Tue and Wed 9:30-12:30,

Brian Flory  
Pastor for Worship  
E-mail: pastorbrian@beaconheights.net  
Office Hours: Tu-Fri. 9:00 -1:00

John and Janice Kulp Long,  
Pastors for Congregational Life  
E-mail: longsgone@hotmail.com  
Office Hours: M,T,W,Th 9-12:30

Anne Ott, Office Manager  
T-9:00-3:00, Th-9:00-3:00, Fri. 9-12:00

Linda Myers, Asst. Secretary  
Mon. & Wed. 9:00-3:00

### STATISTICS

Sunday June 7, 2009

9:00 Sunday School	
10:00 Worship	
Adult Offerings	\$5,763.00
Children's Offering	\$2.00
Matching Grant	\$400.00
Weekly Budget	\$7,277.00



## HOLLENBERGS' GRADUATION OPEN HOUSE

All are invited to join us as we celebrate Aaron's graduation from Northrop High School. His open house will feature a sundae bar on **Sunday, June 28** from 7:00 p.m. to 9:00 p.m. at our home. Please join us as we celebrate this milestone and prepare for the next phase of his life.

Amy and Bill Hollenberg



## Open House and Surprise Wedding Anniversary Party TODAY

for Andy Pinkham as he graduates from Homestead High School, and George and Juanita Mendenhall (a surprise party in honor of their 50th wedding anniversary). **TODAY** from **3-6 p.m.** at Lincolnshire Church of the Brethren, 6404 S. Calhoun St., Fort Wayne. See invitation on Special Events bulletin board for more info and how to RSVP.

## Help Needed with Office Move

Because of the damage caused by leaks over the past year, repairs will be performed in Brian's office this summer. To create space in which to do the work, Brian will be temporarily moving his office to the Pre-school office downstairs. Plans are (at this point) to make this move sometime during the week of June 15, depending on when help is available. This is where you come in! We are looking for two, three or even four people who can spend a couple of hours helping Brian get moved. If you can help, contact Phil Wright, or the church office. Thanks!



## News from New Community Project

### Learning Tours with New Community Project

Are you between the ages of 14 and 104? Eager to have a better understanding of diverse cultures and God's amazing creation? Fascinated by but never been to the Amazon, the Arctic, Central America, Sudan, Burma or Nepal? Open to learning things that may challenge and change you? Then there may be a Learning Tour in your future!

### **2009/2010 New Community Project Learning Tours**

**Honduras**—live and work in a poor village while exploring the causes of poverty (mid-July)

**Denali/Kenai Fjords National Parks in Alaska**—camp and hike in Denali, see caribou, lynx, grizzlies; then whales, sea lions and calving glaciers at Kenai (early August)

**Arctic Village, Alaska**—experience Gwich'in native culture 150 miles north of the Arctic Circle in the foothills of the Brooks Range (mid-August)

**Mountaintop Removal Coal Mining in West Virginia**—learn about the environmental and human cost of removing mountaintops to mine coal (early October)

**Burma**—lush but impoverished southeast Asian nation; home of Aung San Suu Kyi, imprisoned Nobel Peace Prize winner (mid-January)

**Ecuadorian Amazon**—an exploration of the rainforest and the threats to it, guided by Siona leader Delio (mid-May)

**Sudan**—visit one of the most troubling places on earth, hosted by some of the most hospitable, resilient and spiritual people in the world (January 2011)

Reasonable prices, capable leadership (including David Radcliff and Tom Benevento), transformational experiences.

Visit: [www.newcommunityproject.org](http://www.newcommunityproject.org) OR

Email: [ncp@newcommunityproject.org](mailto:ncp@newcommunityproject.org) to learn more.

## Stephen Ministry



### **How do the Pastors fit in?**

*Jethro said to Moses, "What you are doing is not good. You will surely wear yourself out...For the task is too heavy for you, you cannot do it alone."*

*Exodus 18:17-18*

Beacon Heights' pastors are the 'first responders' to people in a crisis. They help them through the first stages but many people need some ongoing care for a longer period of time. All our pastors, and especially Pastors Jan and John, need help providing longer-term spiritual care to people in such a situation. Our pastors will utilize Stephen Ministry to help them provide that longer-term care. This means our pastors:

- No longer shoulder the entire burden of providing trained care in our congregation;
- Can use trained Stephen Ministers to help with support and care to people in crisis;
- Can reach more members of our congregation, plus people in our Fort Wayne community, with quality Christian care;
- Can experience renewed joy and satisfaction as they extend the reach of their own ministries;
- Will have more time to focus on ministries that only the pastor can do.

**STAY TUNED! Next week:  
Who are Stephen Ministers...and what do they do?**

### Volunteers needed

The Nurture commission is looking for volunteers in the following areas:

1. Older Adult Planning Team
2. Memorial Receptions and Funeral Dinners

If you are able to help out with any of these very important positions, please contact the office or Lynn Creath directly.

### Camping Anyone?

The Nurture Commission is exploring an informal church camping opportunity for fun & fellowship! We are looking at July 17 & 18 or July 24 & 25. We are checking out campgrounds about 45 minutes from

Fort Wayne with canoe and biking options as well as normal campground facilities.



If you have an interest in this activity – **Let us know by June 21!**

\***Preference for dates** – July 17 or July 24  
(circle **one** or **both!**)

\***Name** \_\_\_\_\_

**Email** \_\_\_\_\_

**Phone** \_\_\_\_\_

Please clip or tear out and return to Lynn’s box or email to Lynn.

### The Better World Shopping Guide (Every Dollar Makes a Difference)

This is a handy book you may want to look into. Published by New Society Publishers, it lists rankings for the social and environmental responsibility of businesses and corporations.

For instance, if you’re shopping for butter and want to be sure you’re purchasing a brand from a company that manufactures and deals with labor and suppliers in a socially responsible manner, you can look up the item (i.e., butter). Brands are given a letter ‘grade’ (A, B, C, D, or F).

The book is available in a small, easy-to-carry pocket guide and organized by topic (from airlines through dairy through medical, etc.). They’re listed in alphabetical order so it’s easy to use quickly while you’re at the store. You can also look at the research behind the rankings at [www.betterworldshopper.org](http://www.betterworldshopper.org).

It’s available new for \$9.95 on-line and through local retailers.

As our high school youth reminded us last Sunday, our money talks! How we spend and where we buy has an impact on the world and is one way to create change.

**Check it out!**

### Adult Education—Here’s what’s coming!

- June 14 Travels to India—Leslie Sperry, Amanda Taylor
- June 21 Worship Survey Follow-up—Rebecca Harding
- June 28 El Salvador—Dave Young

## **Name Tag; and Biblical Hospitality**

Understanding biblical hospitality helps us understand our use of name tags. Old Testament shows God expected the stranger to be honored, cared for, and given the best of one's resources. The worthiness of the stranger did not matter, only the faithfulness of the one from whom hospitality was needed. Jesus broadened the meaning of receiving the stranger. He said, "I was a stranger and you invited Me in," and conveyed that selfless acts on our part, such as attending to the stranger, play a part in what it means to welcome others as if we were welcoming Jesus himself (Matthew 25: 34-35).



We are called to recognize the presence of Christ in those we don't know and to offer a place to grow in relationship with Christ and with one another. To learn names and to share ours is an essential step. Our name tag transforms us from a sea of unknown faces into real people open to a relationship with all who come through our doors seeking Christ. As we wear our name tags each Sunday morning, may we understand the deeper meaning of our action.

Adapted from "The Visitor Newsletter," Oak Grove CoB, Roanoke, VA, May 2009.

### **Way; to Serve**

#### **Church Board, Church Clerk, Conference Delegates**

The Nominating Committee has started the process of discerning the slate (to be presented at Fall Council Meeting) for Church Board members, Church Clerk, and Annual Conference delegates. Recognizing that we are a small committee and cannot know all of the members well, we invite input from the wider congregation regarding members who have skills and interest in serving the Church in one of these significant ways. If you know of a member of our congregation who has the skills for serving in one of these capacities, or if you feel called, please contact one of the nominating committee members as soon as possible. Any names submitted will be considered by the committee as it continues the discernment processes. Nominating committee members are: Mark Beck, Ethel Klopfenstein, Susan Harroff, and Pastor Jan Long.

# YOUTH

High School

## Picture Party

Sunday, June 28

4:00 - 7:30 p.m.

Drop off and pick up  
at church.



Supper will be provided.

Please RSVP to Shannon and Jeremy

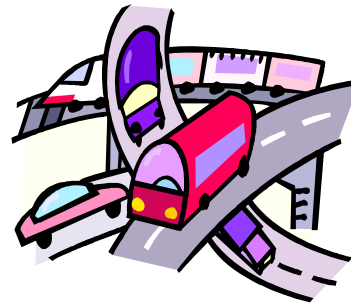


by **NEXT SUNDAY**  
(June 21)

# NEWS

Middle School

## SUMMER EVENTS



JUNE 14-21

HERITAGE TOUR

July 12

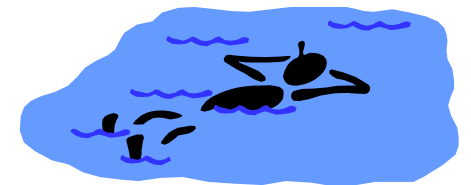
Heritage Tour Report  
for Adult Sunday School

---

Friday July 17 Tin Caps Game

---

SATURDAY  
AUGUST 15  
FAMILY DAY AT  
CHAIN O' LAKES



Shakespeare

Friday, August 28  
Shakespeare in the Park